



This Issue

- WQ 'Sew In'January 13th
- Susan Brubaker Knapp WorkshopFebruary 2nd
- Quarterly Meeting
Susan Brubaker KnappSaturday, Feb. 3rd
- WQ Officer & Chairman Reports
- Call for Entries
- Neighborly Guild Calendar

Next Quarterly Meeting

Saturday, February 3, 2018

St. Johns Presbyterian Church - Fellowship Hall
11000 National Blvd. L.A 90064

Susan Brubaker Knapp



Up Coming Workshops & More

- We're starting off the New Year with our **2nd annual "Sew In"** on **Saturday, January 13th**. A day to work on UFOs or ask for advice on a project that needs a little help. As we did last year, we'll charge a small \$20 fee to cover the cost of the venue and a few supplies. Enjoy a potluck salad lunch with WQ friends. There will be demos, good food and some surprises. More details on page 3.
- Registration is now open for **Susan Brubaker Knapp's Friday, February 2, 2018** workshop entitled "Thread Sketching". We expect this to be a popular class, so sign up early! You can go to the WQ website for registration details and mail in form.
- **Laura Fraga - "Journey with Dear Jane"** workshop **Saturday, March 10, 2018**. Learn where and how to start your journey into the blocks originally made by Jane Stickle for her famous quilt. You will make several Dear Jane blocks as you learn accurate machine piecing, paper piecing and quick cutting techniques. Dear Jane is a quilt that Jane Stickle completed in 1863 during the Civil War. Brenda Papadakis discovered it at the Bennington Museum in Vermont and introduced it to the world in 1996.



PRESIDENT'S MESSAGE

Hello 2018

Wishing all our members a Happy New Year. Hoping that you have wonderful quilting adventures in 2018. Whether you are attending quilt shows, taking classes and workshops, traveling or attending guild meetings, may you find inspiration and camaraderie.

I am looking forward to January. I haven't stepped into my sewing room since the beginning of November. Well, not exactly true, I did hide Christmas presents in there, but no sewing or quilting since then. I am trying to figure out which of the many projects that need finishing I will bring to the January 13th Sew In. I am curious about what our Program Co Chairs will share with us this year. Also gearing up and saving up for the Road2CA show on January 18-21st.

If any of you are interested in starting off the year with a philanthropy project, the Ventura Modern Quilt Guild is asking for help making quilts for victims of the Thomas Fire. If you go to their website they have instructions on how you can get involved. www.venturamodernquiltguild.com. There are a variety of ways to help out.

See you all soon,

Start quilting and keep on quilting in 2018!!

Kim Ryan, President



shutterstock - 81319225

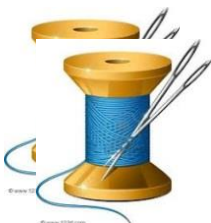
Mark your Calendar for Saturday, January 13th

Our next WQ Programs event is our annual Westside Quilters Sew-in, Saturday, January 13 9:30-3:30 in the Parish Hall at St. Johns Presbyterian Church!

Welcome the New Year and Come for a day of camaraderie and relaxed sewing with your Westside Quilter friends. Bring any on-going project, or a new one; bring your machine, or not (hand work is always welcome and easy to transport); come with an attitude to share and learn from a number of technique demos provided by your Programs Co-chairs. Come with a quilting problem that maybe the group can help you solve. Last year's Sew-in was one of the most popular of the year and we intend to continue the tradition with a pot luck lunch - desserts and drinks will be provided. No supply list - just bring what you need! The fee for the day is \$20.00 just to cover the cost of the room rental and a few supplies. This will be FUN! Please RSVP to Programs@Westsidequilterslosangeles.org if you plan to come so that we know how many to set up for. You can pay in advance by check or CC or bring your payment - cash, check or CC - on the day of.



Note.....If you are planning to attend the sew-in on January 13th, and haven't done so already, could you please RSVP as soon as possible to Programs@westsidequilterslosangeles.org? We need to know approximate numbers so we can set up the room. Let us know if you need space for a machine, or just for hand work.





Westside Quilters presents a workshop with quilt artist, teacher, author and host of *Quilting Arts TV*

Susan Brubaker Knapp

www.Bluemoonriver.com

“Thread Sketching: Still Life With Three Fruits”

Friday, February 2, 2018

9:30 am -3:30 pm

St. Andrews Lutheran Church

11555 National Blvd.

Los Angeles, CA 90064

Workshop Fee \$85.00 (\$80 for early bird registration by January 2, 2018) \$95 for Non-Members.

Thread Sketching: Still Life with Three Fruits

Learn how to add highlights and shadows, and blend colors using thread sketching to create a realistic still life. Students learn how to:

- cut pieces from fusible adhesive and fuse them to the background
- stabilize the fabric surface
- choose the right threads and needles for thread sketching
- adjust tension for the correct stitch
- add color, highlights and shadows using thread
- quilting considerations

The **Supply List** is posted on the WQ website Calendar Page at

About Susan: “Quilting started as a hobby, but turned into a passion and a business. I now teach nationally and internationally, host “Quilting Arts TV,” and have produced numerous patterns, two books, and five video workshops. Creating fiber art is my consuming passion. I am an artist who works in fabric and thread. I find great joy in creating works that draw people closer and invite them to savor color, texture and form.



The art I create is my way of celebrating and documenting the deep mysteries of the world that are to be experienced only by close inspection of the miraculous details of nature. While my core materials — cloth and thread — are those used in traditional quilting, I often employ substances such as fabric paints and dyes, Tyvek, Angelina fibers, and water-soluble wax pastels, to transform the cloth. Nearly all of my work is realistic in style, and starts with original photographs of the subjects. I use two primary techniques – wholecloth painting, and fused appliqué – then heavily free-motion thread sketch the surface before quilting.

Susan will also be our featured speaker at our Quarterly Meeting Saturday, February 3rd.

Want to sign up?

Email to programs@westsidequilterslosangeles.org or call Sally Wright at 310-471-6034.

(more info on page 5)



Thread Sketching: Still Life with Three Fruits

a workshop with Susan Brubaker Knapp

Expand your machine free-motion skills while creating this thread-sketched and quilted still life. Students learn how to:

- fuse down the applique pieces
- create shading, dimension and texture with thread
- gain control and confidence when free-motion stitching
- stabilize the fabric surface
- choose the right threads and needles for thread painting
- correct tension problems
- layer with batting and free-motion quilt

SUPPLIES to bring:

- Two sheets or 1/4 yard Lite Steam-a-Seam 2 or Pellon Wonder Under
- Two pieces 12 x 12" very firm/non-stretchy interfacing, to be used as a stabilizer. Examples include Pellon 910, heavy weight Shaping Aid, or Pellon 806 Stitch-N-Tear. If it stretches at all, it will not work.
- FABRIC NOTE: I like to use batik because it is a bit heavier and it has a very tight weave, which provides more stability and prevents fraying. Stay away from light-weight fabric.
- Light tan/gray fabric for background, 11 x 7"
- Medium tan/gray for background, 11 x 4" (not too dark or it will show through the lighter fruit fabrics and shadows will not show up!)
- Medium red fabric for apple, 6" square
- Yellow fabric for lemon, 6" square
- White fabric for backing lemon, 6" square
- Light green fabric for pear, 6" square
- Cotton embroidery-weight (50 or 60 weight) thread in black, white, light tan, dark brown, dark purple, dark red, red-orange, dark orange, light orange, yellow, yellow-green, medium green and dark green (see photo). Examples include Aurifil Cotton Mako 50 wt., Mettler No. 60 fine embroidery cotton merc., or YLI Soft Touch. Note: 100% cotton thread makes it easier to adjust tension for threadsketching.
- Low-loft cotton batting, 12" square
- 12" square backing fabric
- paper scissors (sharp)
- fabric scissors (sharp)
- seam ripper
- sharp pencil (mechanical works best)
- white chalk pencil (mechanical ones by Bohin or



Sewline work best)

- straight pins (quilting pins)
- light and/or reading glasses, if you need them
- Sewing machine – must be in good working order, able to drop feed dogs, and have a free-motion or darning/embroidery foot.
- manual for your machine
- three empty bobbins
- Universal or Microtex needles, 80/12 or 70/10
- extended surface for your sewing machine (if you have one; highly recommended)

Please e-mail me if you have any questions!

Susan Brubaker Knapp
469 W. Center Ave., Mooresville NC 28115
TEL: 704.663.0335
E-MAIL: susan@bluemoonriver.com
WEB SITE: www.bluemoonriver.com
BLOG: www.bluemoonriver.blogspot.com

PHILANTHROPY

First of all, I would like to thank all the wonderful individuals who took the time to make 40 quilts in less than 4 months! We were able to give 16 large quilts to Upward Bound and 24 quilts to A Child's Dream. A Child's Dream also received 12 receiving blankets, 30 hats (both baby/teen/adult) and 2 hat/scarf sets.

We will continue supporting these two worthwhile organizations through 2018 (delivery to be in December 2018) and hope to see many more of your wonderful creations throughout the year. Remember we will be collecting quilts, receiving blankets and hats (baby/toddler/teen/adult) also.

Below are some links that you can check into for tutorials:

- Jenny Doan and receiving blankets: <https://www.youtube.com/watch?v=TtXmuARqg38>
- Ellen Harpin's adult hat: <https://www.ravelry.com/patterns/library/ellens-knit-hat>
- Burp cloths: [How to sew a Burp Cloth - easy for beginners!](#)
- Baby Hat: [Two Baby Hat Knitting Patterns](#)
<https://www.allfreeknitting.com/Baby-Knit-Hats/Two-Baby-Hat-Knitting-Patterns>
- Crochet hats: [50 Beginner Crochet Hat Patterns](#)
<https://www.allfreecrochet.com/Hats/24-Beginner-Crochet-Hat-Patterns>



We wish you all a wonderful New Year!

*Perla Rothenberg, Lisa Drew, Virginia Marshall
Philanthropy Co-Chairs*

Philanthropy Workshop Quilts Delivered



Upward Bound Pictured to left is Ramona Ruiz, volunteer coordinator at Upward Bound, they are located in the garage of building! Ramona said when family's come to shop tomorrow they can pick out a quilt, most appreciative.

A Child's Dream

A Child's Dream Items before pickup.



*Child's Dream volunteer
picking up items*

Thank you to all who
participated in our
Philanthropy Day!



Leadership.....


Almost everyone seems to agree that 2017 roared by like a speeding freight train, I just finished taking in the flags from the 4th of July. What happened? Those gremlins that come in my house at night can obviously do more mischief than just rearrange my *stuffs*. I think they can steal time as well. So here we are, like it or not, on the doorstep of a new year.

Many people choose a word or phrase to focus on for the new year, and I usually do too. I haven't quite committed to a word yet, but I saw a T-shirt the other day that makes for pretty good mantra.

Travel Light
Live Light
Spread the Light
Be the Light

Works for me! Here's to a healthful and happy New Year!

Sonja Daniel
WQ Vice President



| | |
|--------------------|------------|
| Keiko O.Tapp | January 2 |
| Carollee Schuegra, | January 4 |
| Elizabeth Morris | January 9 |
| Florann Ramsey | January 14 |
| Aileen Cooke | January 21 |
| Jennie Lou Kraft | January 27 |
| Sally Wright | January 30 |
| Luann Jaffe | January 31 |



Workshop costs

Thanks to our members for being so supportive of our workshops. We, the program chairs, carefully pick our workshop teachers. We look for people that are top in their field and have a good reputation in the quilt world. We are concerned that we vary the skills they teach.

We try to cover all aspects of quilting. Then we concern ourselves with the cost to you our members. We have to pay rent for the workshop; we pay the teacher and provide any meals, housing, and transportation involved. Lots of costs!

It is not our goal to make a profit only to hopefully cover expenses.

So.... your participation is essential.

Your WQ Program Chairs:

Sally Wright, Kathryn Pellman, Roberta Walley



Another New Year's Resolution bites the dust.

WORKSHOP REGISTRATION

First, please email your intent to attend a workshop to: Programs@WestsideQuiltersLosAngeles.org At the **WQ** website, choose *Calendar* and scroll down to individual workshops. See the link to the Workshop Registration Form (which you can fill in on-line and then print) and the supply list. **See the workshop no-refund policy (substitutions allowed) shown on the Workshop Registration Form.**

WQ will hold your space at the workshop for 14 days to allow time to mail Registration Form and payment to the WQ post office box. For last-minute registrations, contact the Program Chair ASAP. **Credit cards/debit cards now accepted.** Non-members pay a \$15.00 surcharge. Supply lists for all classes can be found on the Calendar page at www.WestsideQuiltersLosAngeles.org. The class sessions are from 9:30am to 3:30pm.



TREASURER

Karynn Dittmar, Treasurer

| | | |
|---------------------------------------|---------|----------------|
| OPENING BALANCE AS OF 6/1/17 | | 8146.58 |
| | | |
| INCOME | | |
| Membership Dues / Donations | 2910.00 | |
| Workshop Fees | 1955.00 | |
| Guest Fees | 20.00 | |
| Fabric Sale Fundraiser | 994.00 | |
| Amazon | 112.17 | |
| | | |
| TOTAL INCOME | | 5991.17 |
| | | |
| EXPENSES | | |
| Workshop Expense | 2202.01 | |
| General Meeting Expense | 1614.90 | |
| Charitable Contributions | 460.00 | |
| Membership Expense (refund) | 50.00 | |
| SCCQG Insurance | 310.00 | |
| Website | 220.25 | |
| PO Box Rental | 132.00 | |
| Philanthropy / Ed. Expense | 200.00 | |
| Printing / Promotion / Admin. | 45.86 | |
| Square Up Fees | 56.44 | |
| Government Fees | 25.00 | |
| | | |
| TOTAL EXPENSE | | 5316.46 |
| | | |
| NET INCOME | | 674.71 |
| | | |
| CLOSING BALANCE as of 12.31.17 | | 8821.29 |

MEMBERSHIP

Membership doesn't have much news at the moment. I did something to my computer and don't have the roster at the moment. I'm hoping that either Karynn or maybe my grandson can help me restore what damage I did. If you have anything more creative to say please feel free.

"We are up to 83 members but always looking for more."

Happy New Year,

Luann
Membership Chair

WEBSITE:

Check out photos from our very successful Philanthropy Day on the website!

The WQ website at www.westsidequilterslosangeles.org has recently been update with photos from our workshop with Maria Shell and all the quilts shown during Quilters Showcase at the October 21 meeting.

Please note that the Members Only page of the website has just been updated with the new password for the 2017-18 Membership year. The log-in and new password have recently been sent to you in your Membership Letter. Please note the info and put it in a safe place where you can find it easily. The Members only page is where you can access the Membership Roster along with other members' info from time to time and catch up on and refer to an archive of WQ Newsletters.

Sally Wright, Website Manager

Calls for entry

Continuing our notifications for ways to display your quilts and textile pieces to a wider audience... Entering shows is not difficult, but to begin here are a few guidelines:

- Always make sure you read everything in the call including the calendar, requirements, rules, etc. Especially the rules! This will save headaches and disappointment later on.
- Keep a record on your entries so you won't be caught with a quilt needing to go two places at once. Having to remove a quilt from a show or exhibit because you misread the exhibition dates is a no-no. Ask me how I know...
- Having a great photo of your quilt - straight on, in focus, not on a bed or held up showing hands and feet, super important. There is lots of great info on quilt photography on line. Google!
- Don't be intimidated or depressed by a rejection! There are lots of different reasons why a quilt doesn't fit into a specific show. It is usually not because your quilt is bad!

The calls below are just a sample of the many opportunities out there. For more search "Fiber Art Calls for Entry" or "Quilt Calls for Entry"

A Celebration of Color, Chicago Quilt Festival, April 12-14, 2018 *Entry deadline January 11, 2018*
<http://www.callforentriescolor.com>

Quilt Visions 2018: Connections, Visions Art Museum: Contemporary Quilts + Textiles San Diego, California October 20, 2018 – January 6, 2019 *Entry Deadline January 31, 2017*
<http://www.visionsartmuseum.org/call-for-entries/>

SAQA Dusk to Dawn (SAQA Members) IQF Houston, 2018 *Entry Deadline January 31, 2018*
<http://www.saga.com/calendar-detail.php?ID=5386>

Fantastic Fibers 2018, Yeiser Art Center, Paducah, KY, April 14 to June 9, 2018. *Entry deadline February 16, 2018* www.theyeiser.org

AQS QuiltWeek Grand Rapids, August 22-25, 2018, *Entry Deadline April 13, 2018* <http://www.quiltweek.com>

Questions? sally@sallywrightquilts.com

Sally Wright





A NEIGHBORLY GUILD CALENDAR

| | |
|--|--|
| January 2018 | |
| January 3 Santa Monica Quilt Guild www.santamonicaquiltguild.org | <u>Philanthropy Sewing Night</u> |
| January 9 Orange County quilters Guild www.orangecountyquiltersguild.com | <u>Peggy Martin</u> – Program: Beyond Tradition |
| January 11 Simi Valley Quilt Guild www.simivalleyquiltguild.org | Janet Botroff, <i>A Quilter's Journey</i> |
| January 13 Westside Quilters www.WestsideQuiltersLosAngeles.org | Westside Quilters "Sew-In" |
| January 16 South Bay Quilters Guild www.southbayquiltersguild.org | <u>Mike McNamara</u> Program: Influences in Quilting-making, why and how I make my quilts |
| January 21 African American Quilters of Los Angeles www.easysit.com/aaqla | <u>Meeting</u> |
| January 10 Glendale Quilt Guild www.glendalequiltingguild.org | Beth Stanton Program: Friends Who Quilt |
| | |
| February 2018 | |
| February 2 & 3 Westside Quilters www.WestsideQuiltersLosAngeles.org | Susan Brubaker Knapp Program: "The Artist in You", Workshop: |
| February 7 & 10 Glendale Quilt Guild www.glendalequiltingguild.org | <u>Sandra Johnson:</u> Program: Workshop: Denim Quilting |
| February 15 Los Angeles County Quilters Guild www.quiltquildla.org | <u>Jean Impey</u> Program: Trunk show |
| February 20 San Fernando Valley Quilt Association www.sfvqa.net | Veterans Quilt Project |
| February 21 African American Quilters of Los Angeles www.easysit.com/aaqla | <u>Meeting</u> |
| February Santa Monica Quilt Guild www.santamonicaquiltguild.org | <u>Quiet</u> |
| February Orange County quilters Guild www.orangecountyquiltersguild.com | <u>Quiet</u> |
| February Simi Valley Quilt Guild www.simivalleyquiltguild.org | ? |
| February South Bay Quilters Guild www.southbayquiltersguild.org | <u>Quiet</u> |

OUT AND ABOUT

- ✂ The **Huntington Library and Galleries** is showing eight 19th Century Quilts.
For more information go to www.huntington.org.
- ✂ “Axe Bahia – The Power of Art in an Afro-Brazilian Metropolis at the **Fowler Museum** at UCLA through April 15, 2018.
- ✂ **Road to California** January 18th through 21st 2018 – for details and hours road2ca.com
Sally Wright and Sherry Kleinman both have two quilts juried into Road to California.

See the Speaker Calendar of the Southern California Council of Quilt Guilds for additional events. Go to www.sccqg.org scroll down to the bottom of the homepage and click on the box “Speakers” and see other SCCQG guilds and speakers into 2018.

Sally Wright's entry in the 2017 Cherrywood Van Gogh Challenge “Starry” has been juried into the traveling exhibit which will be displayed at Road to California and many other national and international venues throughout 2018.



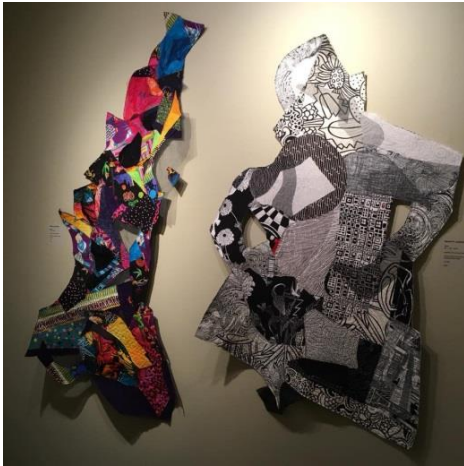
| | | |
|--|--|--|
| | <p>Art Quilts - 69 quilts from two SAQA regions:</p> <p>Image: Vicki Bohnhoff's “Dutch Morning”</p> <p>Northern California/Northern Nevada & Southern California/Southern Nevada</p> | <p>California Heritage Museum Santa Monica</p> <p>December 9, 2017- March 18, 2018</p> <p>2612 Main Street Santa Monica, CA 90405 Hours: Wed. - Sun. 11 am to 4 pm www.californiaheritemuseum.org</p> |
|--|--|--|

The banner for the California Heritage show is
Kathryn Pellman's
“Nasty Woman”



OUT AND ABOUT continued.....

Five of our own Westside Quilt Guild members have quilts in the **Art Quilts - 69 quilts from two SAQA regions** show: WQ Artists in order: Vicki Bohnhoff, Sherry Kleinman, Sandra Lauterbach, Carole Ann Frocillo, and Kathryn Pellman



Editor's Note:

There are 2 must see exhibits this month. First, **Road to California** runs January 18th through 21st. If you have never been to Road to California, make a plan to go. Call a friend and carpool to Ontario (yes it's a long drive but worth it). Hundreds of amazing quilts are on display to inspire you and hundreds of vendors are there to tempt you!

Second, and much closer to home is **Art Quilts – 69 quilts from two SAQA regions** at the California Heritage Museum Santa Monica. This exhibit runs through March 18. The creativity and craftsmanship in this show is top notch!

Happy New Year and Happy Stitching,
Debbie Nussbaum



Westside Quilters Board Meeting Minutes November 18, 2017

Will be printed in the February newsletter



Next Executive Board Meeting

The next meeting of the Executive Board will be held, January 27, 2018
All members of Westside Quilters are welcome to attend with prior notice to
Pres@WestsideQuiltersLosAngeles.org.

Our Mission

A new kind of guild organized for educational and charitable purposes; to promote cooperation and the exchange of ideas among quilters; to instruct members in methods and techniques of traditional and contemporary creative quilting; to serve mini-groups and their philanthropic endeavors within the community; to inspire personal achievement.

Officers 2017-2018

| | |
|-----------------|---|
| President | Kim Ryan |
| Vice President | Sonja Daniel |
| Secretary | Sally Madigan |
| Treasurer | Karynn Dittmar |
| Program | Sally Wright, Roberta Walley, Kathryn Pellman |
| Membership | Luann Jaffe |
| Newsletter | Debbie Nussbaum |
| Philanthropy | Perla Rothenberg, Virginia Marshall, and Lisa Drew |
| Website Manager | Sally Wright |

Appointed Positions

| | |
|---------------------------------|--|
| Hospitality | Bobbi Leung |
| Meeting Set-Up/Take-Down | Marianne Simpson Lisa Drew and Sonja Daniel |
| Photographer | Tanya Heldman |
| President Emeritus | Perla Rothenberg |

Mailing Address **Post Office Box 641925**
 Los Angeles, CA 90064

Website

www.WestsideQuiltersLosAngeles.org

Facebook We're on Facebook. Check out the banner on the WQ website home page (lower center).

Amazon There is a boxed message in the lower center of our website home page giving a direct link to Amazon. By using this link, anything you purchase earns a 4% "dividend" paid directly to WQ. *This only works if you enter the Amazon website from the WQ website link.*

iGive.com This is another way to benefit WQ when shopping on the Internet. Here you need to register (the iGive.com logo appears in the lower center on the WQ website home page and links you directly to iGive.com). More than 800 Internet retailers participate (Barnes & Noble, Bed Bath & Beyond, Enterprise Rent-A-Car, Lancome -- to name a few). Follow the instructions at iGive.com.

Non-Profit Status Westside Quilters is tax-exempt from Federal income tax under section 501(c)(3) of the Internal Revenue Code, and classified as a public charity under section 170 of the Code, according to the determination letter dated May 26, 2011 received from the Internal Revenue Service. The effective date of exemption is June 17, 2010. Donations to Westside Quilters are fully tax-deductible for individuals and other entities such as corporations, partnerships, trusts; Westside Quilters is qualified to accept tax deductible bequests and gifts or transfers of gifts.

F.E.I.N. 27-3145733
(Federal Employer Identification Number)

**Happy
New Year!**